

LAUNCH

J-Box 2 Quick Start Guide



PLEASE NOTE

J-Box 2 interfaces have been carefully designed and tested to comply with OBDII protocols. However, some vehicle models are not in full compliance with these protocols for various reasons. In addition, the computer control systems or sensors on any given vehicle may be malfunctioning or out of specification.

While Launch Tech's testing and the experiences of thousands of J-Box 2 users have shown the unit to be safe and reliable, there is an inherent risk in using any product that may potentially affect the operation or drive-ability of your vehicle.

If you are concerned about the operation of your vehicle at any time while using J-Box 2:

- * Pull off the roadway immediately or as soon as it is safe to do so.
- * Disconnect the J-Box 2 from the OBDII port.
- * Consult a licensed mechanic or automobile service center.

Please report any issues or concerns to our Technical Support Department at support@drewtech.com or (734)222-5228 option 3. We are open Monday through Friday, 9:00 a.m. to 5:30 p.m. Eastern Time. We maintain an active database of the feedback we receive, and your comments can help us continuously improve the product.

COPYRIGHT & TRADEMARKS

Copyright 1999-2015 Drew Technologies, Inc., All Rights Reserved. MongoosePro, CarDAQ, ScanDAQ, IMclean, IMready and J2534 ToolBox are registered trademarks of Drew Technologies, Inc. All other trademarks and brand names are the property of their respective owners.

LIMITED WARRANTY

Launch Tech USA and Drew Technologies, Inc. guarantees that every J-Box 2 is free from physical defects in material and workmanship under normal use for two years from the date of purchase.

IN NO EVENT SHALL DREW TECHNOLOGIES, INC.'S or Launch Tech USA's LIABILITY EXCEED THE PRICE PAID FOR THE PRODUCT. DREW TECHNOLOGIES and Launch Tech USA SHALL BE EXEMPT FROM ALL OTHER CLAIMS WHETHER BASED UPON DIRECT, INDIRECT, SPECIAL, INCIDENTAL, OR CONSEQUENTIAL DAMAGES RESULTING FROM THE USE OF THE PRODUCT, ITS ACCOMPANYING SOFTWARE, OR ITS DOCUMENTATION. Drew Technologies, Inc. and Launch Tech USA make no warranty or representation, expressed, implied, or statutory, with respect to its products or the contents or use of this documentation and all accompanying software, and specifically disclaims its quality, performance, merchantability, or fitness for any particular purpose. Drew Technologies, Inc. and Launch Tech USA reserve the right to revise or update its products, software, or documentation without obligation to notify any individual or entity. Please direct all inquiries to:

Drew Technologies, Inc.
3915 Research Park Dr
Suite A10
Ann Arbor, MI 48108

FCC Statement

The wireless module has been tested and found to comply with the FCC part 15 and IC RSS-210 rules. These limits are designed to provide reasonable protection against harmful interference in approved installations. This equipment generates, uses, and can radiate radio frequency energy and, if not installed and used in accordance with the instructions, may cause harmful interference to radio communications. However, there is no guarantee that interference may not occur in a particular installation. This device complies with part 15 of the FCC rules. Operation is subject to the following two conditions: (1) this device may not cause harmful interference, and (2) this device must accept any interference received, including interference that may cause undesired operation. Modifications or changes to this equipment not expressly approved by the part responsible for compliance may render void the user's authority to operate this equipment.

Modular Approval, FCC and IC

FCC ID: X3ZBTMOD3

IC: 8828A-MOD3

In accordance with FCC part 15, the SPT2632C1A.AT2 is listed above as a modular transmitter device

Contents

PLEASE NOTE	2
COPYRIGHT & TRADEMARKS	2
LIMITED WARRANTY	2
FCC Statement.....	2
Contents	3
Introduction.....	4
Get to know J-Box 2	4
Driver installation	4
J2534 Toolbox 3.....	9
DrewTech Tech2Win Driver	12
Specifications.....	13
Technical Support.....	13

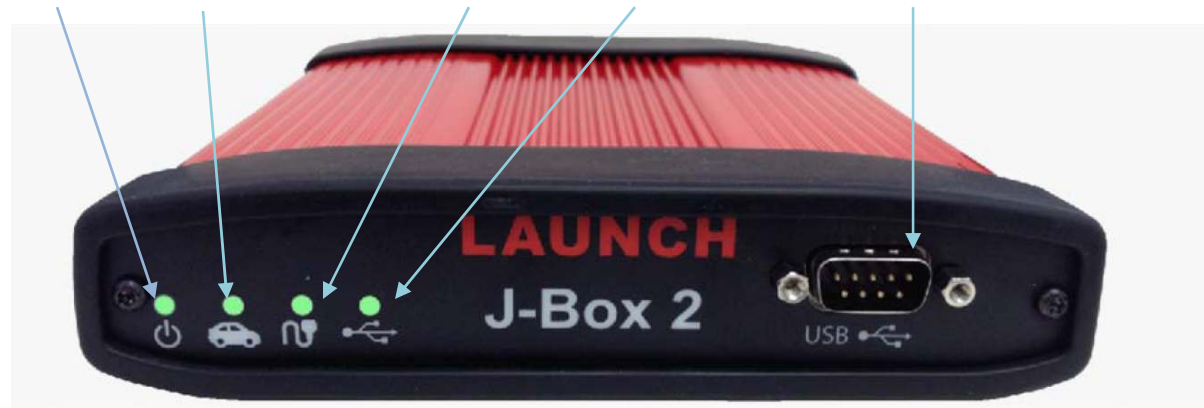
Introduction

Thank you for choosing J-Box 2! The J-Box 2 will allow you to re-flash modern vehicle controllers to stock as well as perform dealer level diagnostics on select manufacturer's vehicles.

This Quick Start Guide covers the initial setup, features, and common questions. This manual is always available at www.Launchtechusa.com. Information for individual manufacturers can be found in the J2534 Toolbox 3 application.

Get to know Launch J-Box 2

Power Protocol Connection Vehicle Cable USB Cable USB Cable Port



Auxiliary Programming Voltage

Vehicle Cable Connection

LED Status lights:

	Solid Red	Blinking Red	Solid Green	Blinking Green
Power	-	Firmware error-Call Tech Support	Device Startup In progress	Device is Functioning
Protocol	-	-	Connected to Vehicle	Connected & communicating with Vehicle
Vehicle Cable	Cable Not connected or Cable error	-	Cable Ok and Vehicle power detected.	-
USB Cable	Install issue-Call Tech Support	-	Connected to PC.	-

Driver installation

Insert the CD included with your J-Box 2 into your PC. You will need to have an internet connection to get the latest drivers. If your PC does not have a Disk Drive, please go to <http://www.drewtech.com/downloads/index.html> to get the J-Box 2 Installer.

1. Run the Setup application, check the box next to "I accept the terms..." and click install.



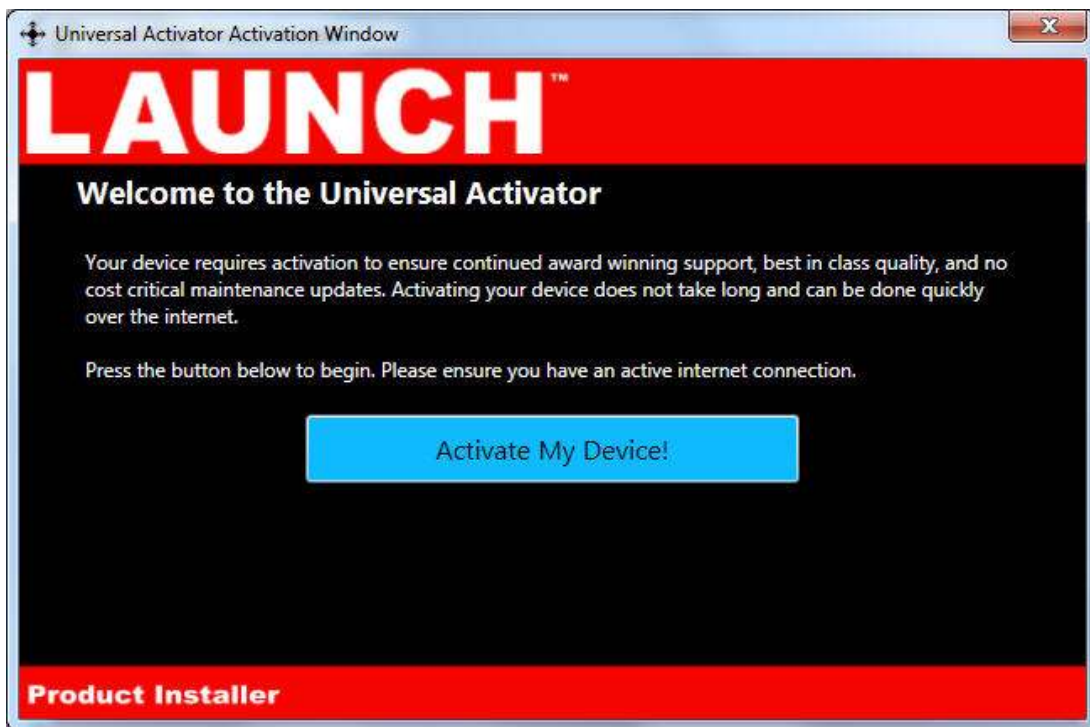
2. The Setup application will install the J-Box 2 Drivers, the J2534 Toolbox 3 and the Tech2Win driver on your PC.



3. Once the setup application has finished, Connect the USB cable to your J-Box 2 and to the PC. Once you have gotten a message in the lower right hand corner that the device has been installed, click Activate My device. Then Click Exit.



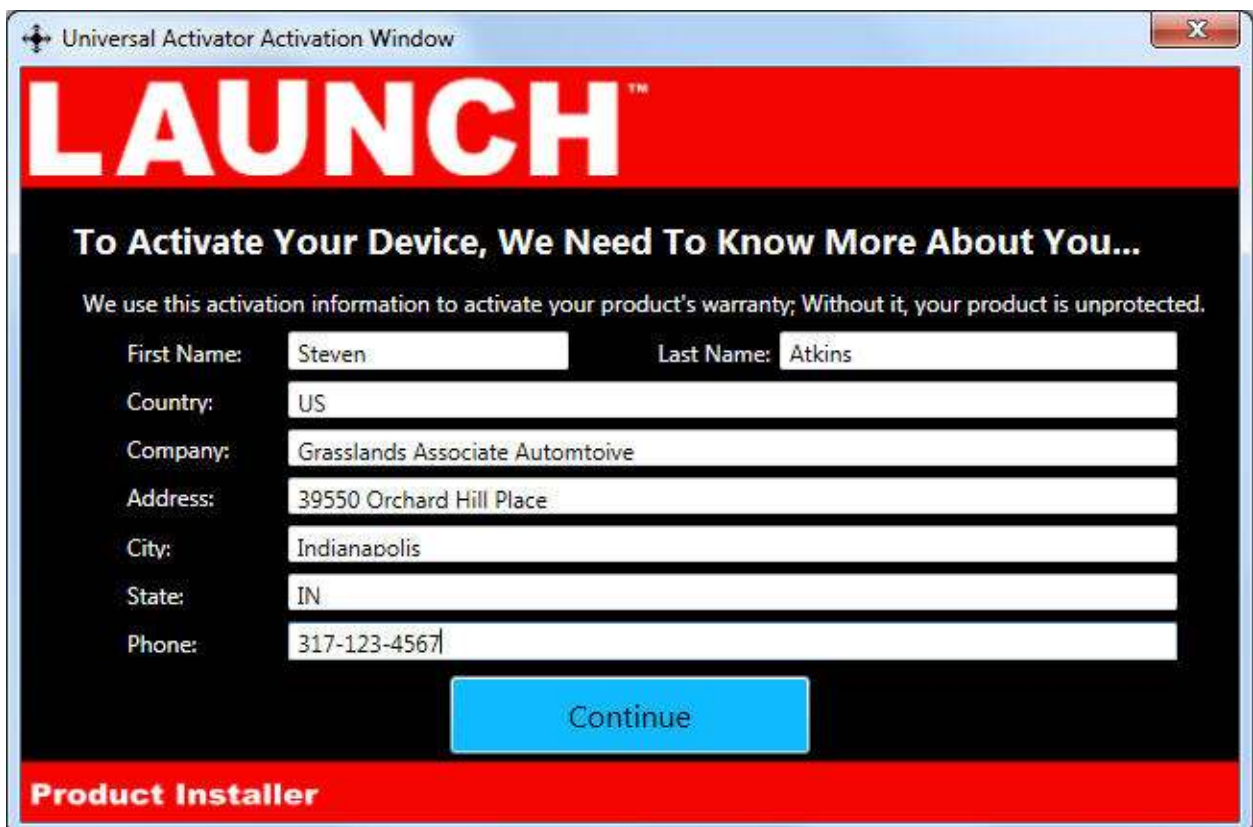
4. The activator application will open after clicking Activate My Device in the setup application. Click the Activate My Device! Button.



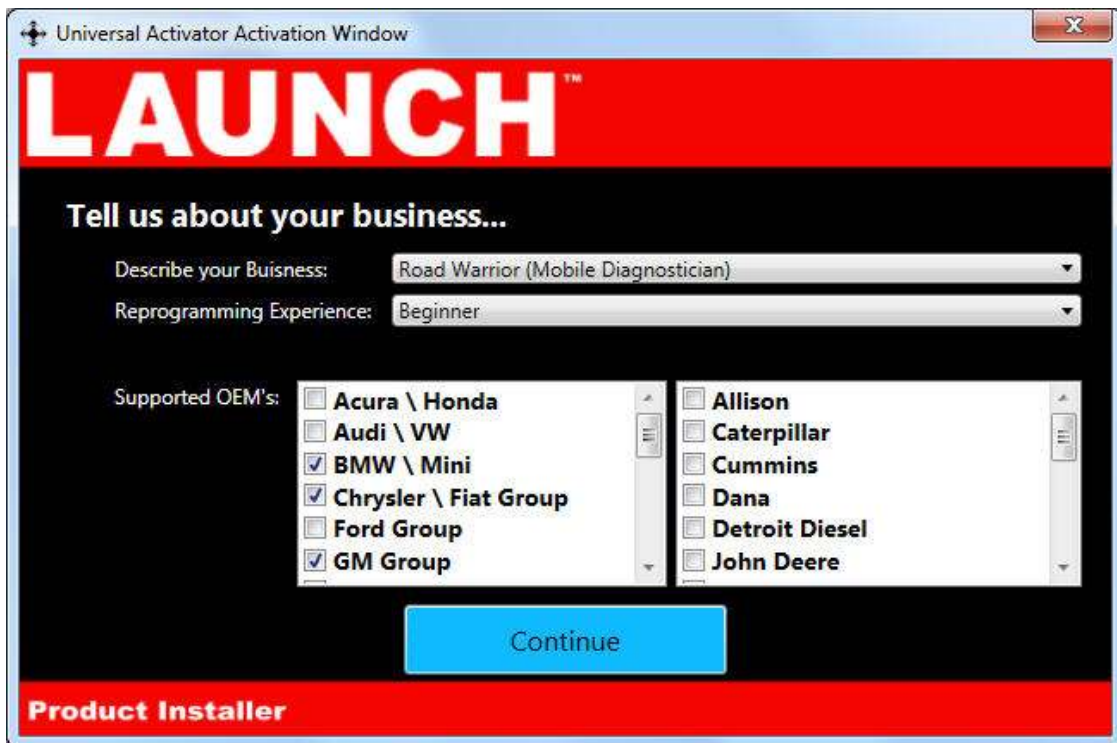
5. Select the interface you want to activate and click Continue.



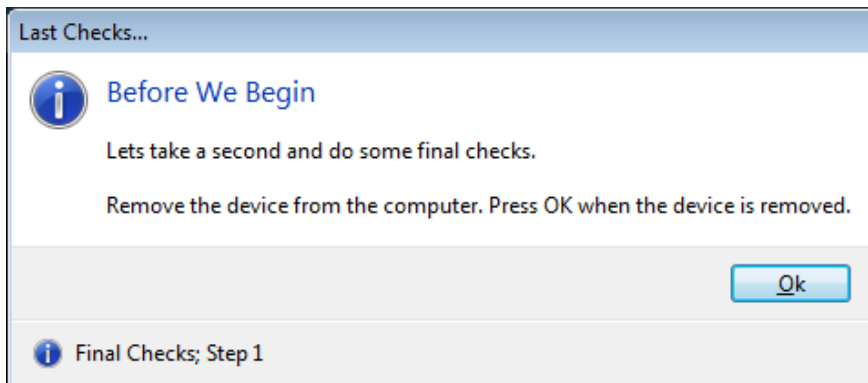
6. Enter your information and Click Continue.



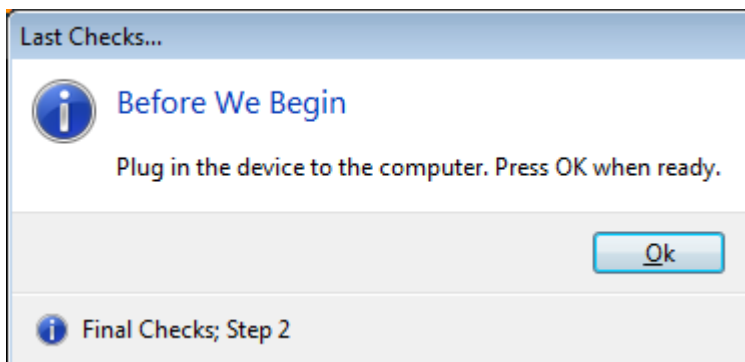
7. Select your type of business and level of programming experience, then select the OEMs you are planning to support. Click Continue once you are done.



8. Unplug your J-Box 2 from your PC and click OK.



9. Plug your J-Box 2 back into your PC, and click OK.



10. Your device has been successfully activates, click close application.

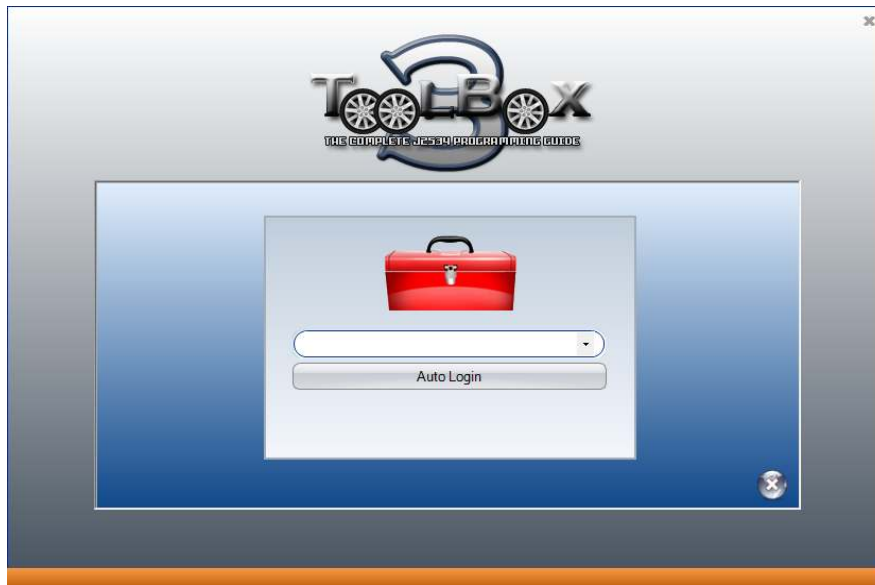


J2534 Toolbox 3

1. Double Click the J2534 Toolbox 3 Icon on the Desktop.



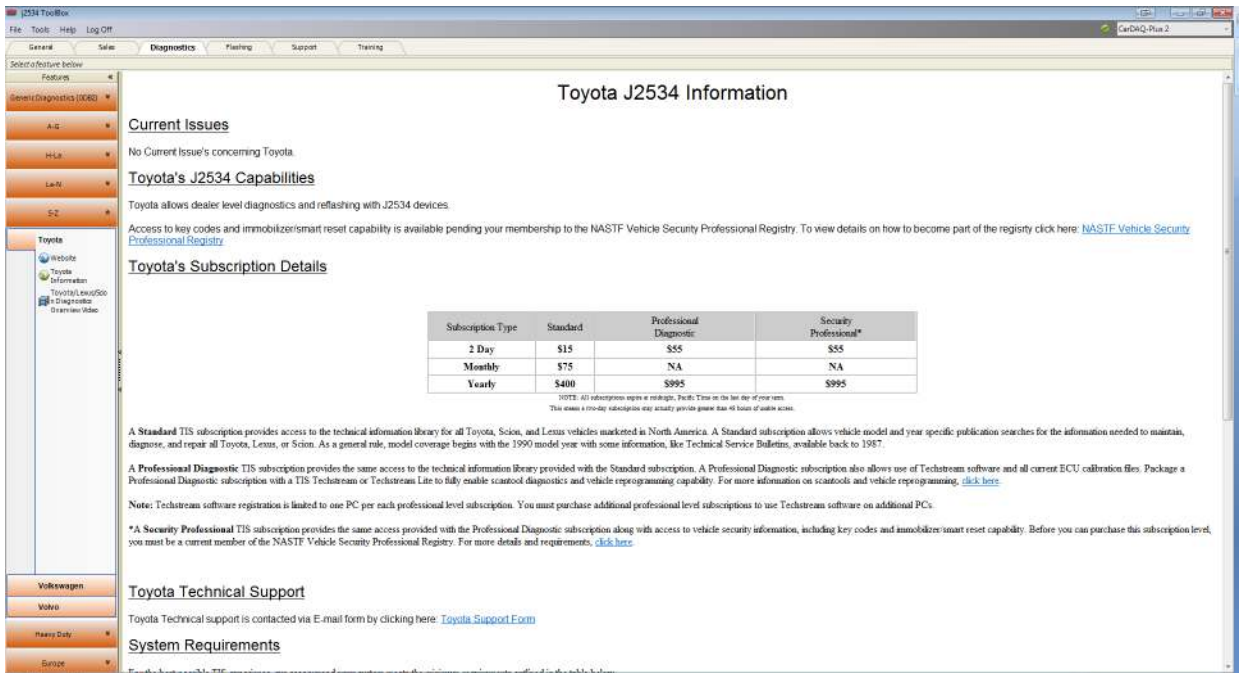
2. Select your interface from the drop down and click Auto Login.



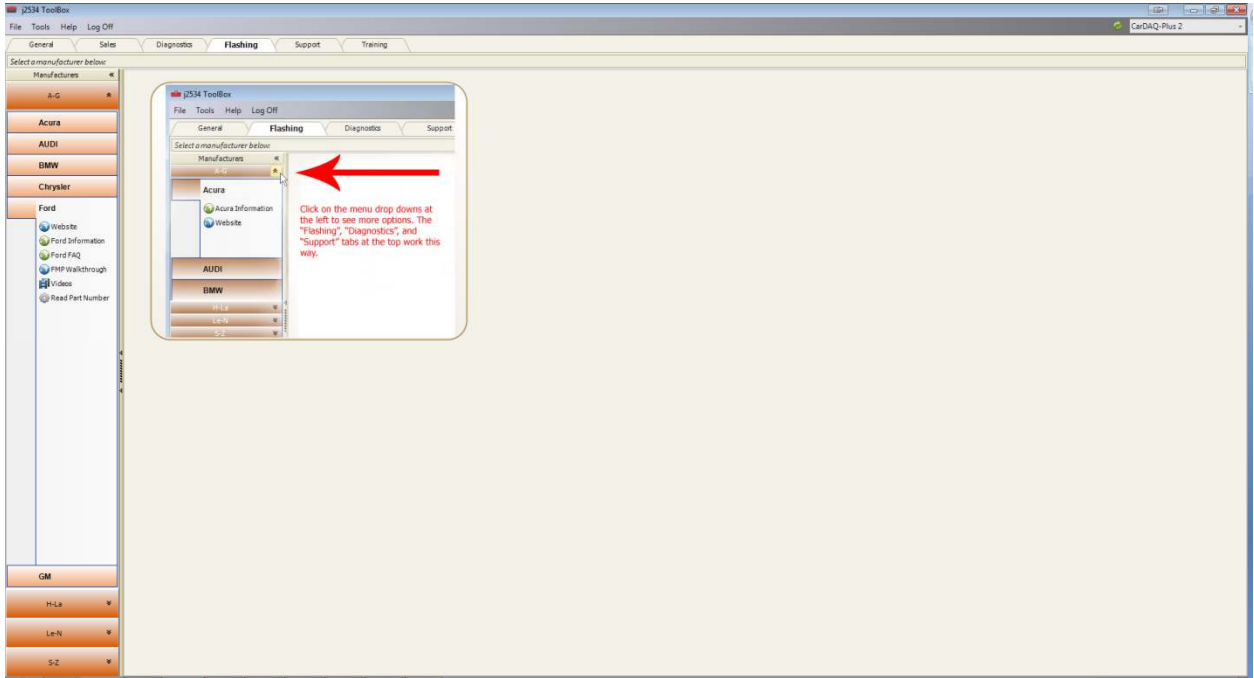
- The Toolbox will open with 6 tabs available. The first is General, it has news, current OEM concerns, and training broadcast invitations. The sales tab is connected to the Drew Tech website.



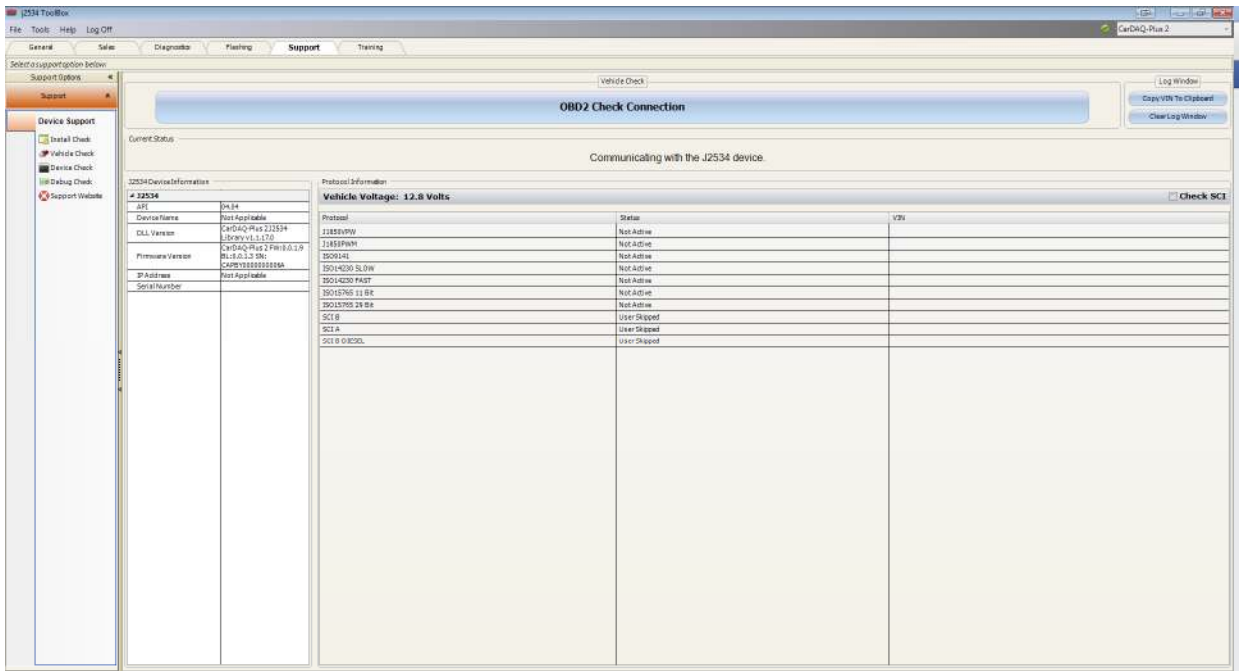
- The Diagnostics tab has basic Diagnostic functions, as well as links, information and videos about all OEMs that currently provide Diagnostics via J2534.



- The flashing Tab contains the information pertaining to OEM J2534 reflashing including links, information, walkthroughs, and some helper functions.



- The Support tab has functions to check driver installation, vehicle communication, update your device, create debug logs, and contact Technical Support.

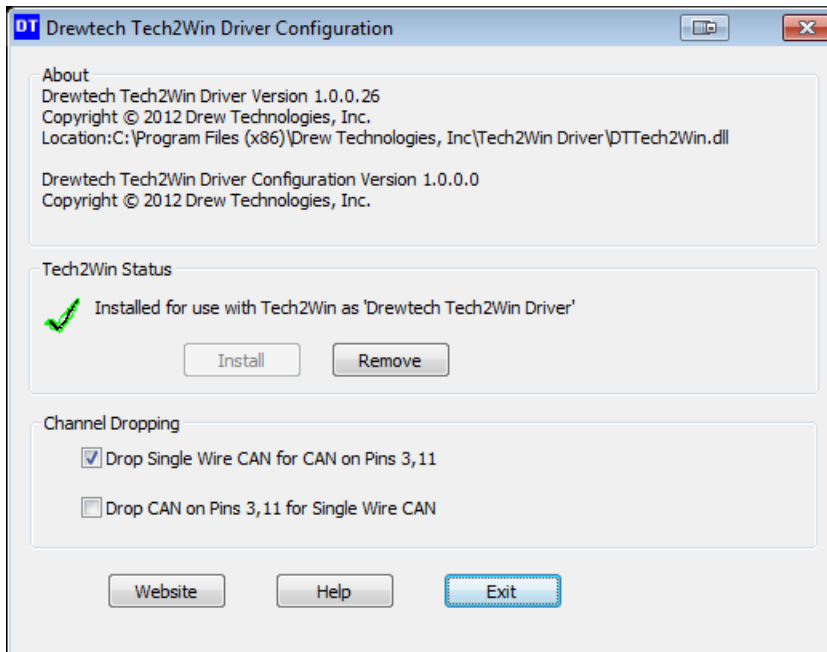


- The Training tab includes videos of installing and using OEM J2534 applications.

DrewTech Tech2Win Driver

The DrewTech Tech2Win driver allows technicians to use the J-Box 2 as an interface for the Tech2Win application. If you experience concerns, the first place you can check the status and configuration by following the instructions below:

1. Go Start>All Programs>Drew Technologies, Inc.>Tech2WinDriver and open the Drewtech Tech2Win Driver Configuration application.
2. Confirm that the driver is installed, which is indicated by a green check mark.



3. If there is a red X, click Install. If Install does not work. Close the Configuration tool and right click on the start menu short cut and choose "Run as Administrator." Then click Install once the configuration application is running.
4. Depending on which systems you are diagnosing, you will want to check the top or bottom check box under Channel dropping to communicate on either proprietary CAN channel. CAN on 6 & 14 is not affected by this.

Specifications

Supported Protocols

- CAN Bus (capable of ISO 15765, GMLAN, J1939, and ISO14229)
- 2nd CAN (Dual or Single Wire)
- Ford SCP (J1850PWM)
- GM Class2 (J1850VPW)
- KWP2000 (ISO9141/14230)
- Chrysler SCI (J2610)
- Compliant to [SAE J2534](#) (Feb 2002) and [SAE J2534-1](#) (Dec 2004)
- Compliant to [ISO 22900-1](#) MVI physical layer
- Programming voltage on J1962 pin 6, 9, 11, 12, 13, 14 or Aux
- Ground pin 9

Physical Specifications/Tolerances:

Name	Value
Input Voltage Range	7VDC to 27VDC
Supply Current	220mA @ 7VDC 175mA @12VDC
Operating Temperature	+0C to +60C ambient
Storage Temperature	-20C to +85C ambient

Technical Support

Please contact Drew Technologies for technical support at support@drewtech.com or 734-222-5228 opt. 3.

If technical support finds it necessary for the unit to be returned for repair, you will be asked for your contact information and then provided with a Return Merchandise Authorization number (RMA#). Drew Technologies will use the RMA to track the unit through the repair process. Please write this number on the outside of your shipping box so it can be routed to the correct department. If the necessary repair is not covered by Drew Technologies' warranty, you will be contacted for payment arrangements.